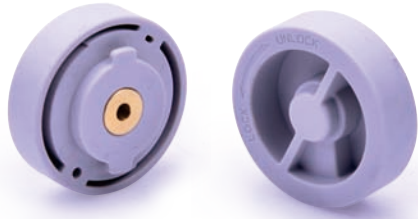


GA Series Reverse Flow valve



Product feature

1. This reverse flow valve can be used with GA series regulator but can not be ordered individually.
2. When it is used with GA series regulator, one only needs to change the seal board in the back of regulator for the reverse flow valve. It is convenient to install and won't change the external dimension of regulator.

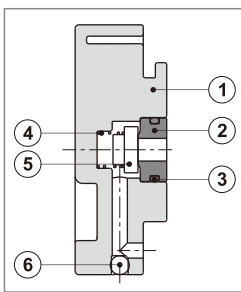
Applicable products

Reflux valve type\Applicable products's type	GA F.R.L Comintation	GA FR.L Comintation	GA Filter & regulator	GA Regulator
GAR200-P1	GAC200	GAFC200	GAFR200	GAR200
GAR300-P1	GAC300, 400, 500, 600	GAFC300, 400, 500, 600	GAFR300, 400, 500, 600	GAR300, 400, 500, 600

Ordering code

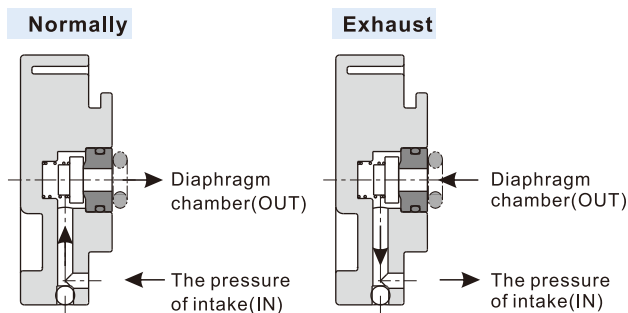
When GA series regulator is assembled with the reverse flow valve, the valve can be ordered together with the standard product. What needs to do is to add "-K" to the end of the ordering code of the standard product. Please refer to relevant content for more detailed order method.

Inner structure



No.	Item	Material
1	Reverse flow valve's body	POM
2	Plug	6061C-T6
3	O-ring	NBR
4	Spring	SUS304
5	Gasket	NBR
6	Steel ball	SUS304

Working principle

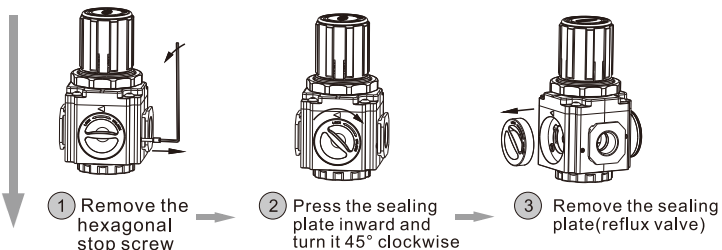


Normally, as the pressure of intake (IN) is higher than the set valve (pressure of outlet), the reverse flow valve closed; if the pressure of intake (IN) is cut off and starts exhaust, reverse flow valve opens. The pressure of diaphragm chamber is exhausted from IN orifice. At this moment, the pressure of diaphragm chamber decreases and the diaphragm is pressed down by the force from adjusting spring to open valve. The pressure from outlet is exhausted from IN port.

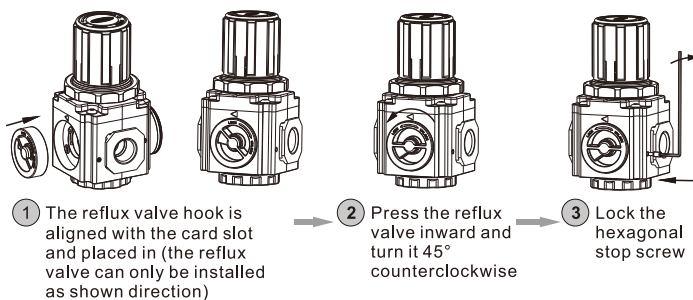
Example for assemble the reflux valve

1. Reflux valve installation steps:

a Disassembly sealing plate

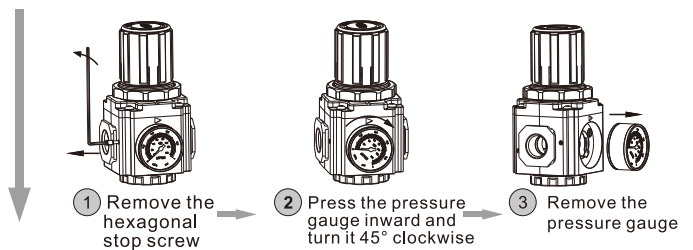


b Reflux valve installation



2. Gauge adapter (used when no pressure gauge is attached) Installation steps:

a Disassembly pressure gauge



b Gauge adapter installation

